

Paint like Miro

~Creative Center Hospital Artist-In-Residence Sascha Mallon

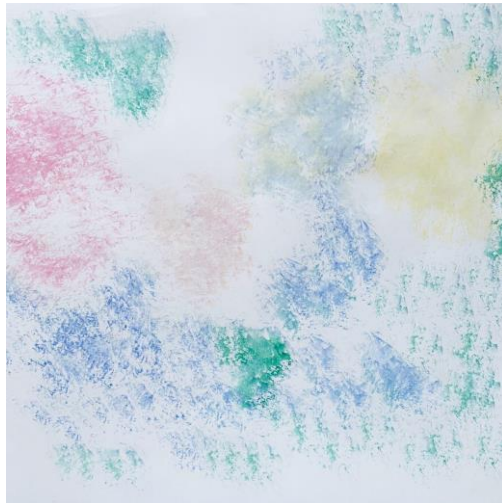


Materials you need:

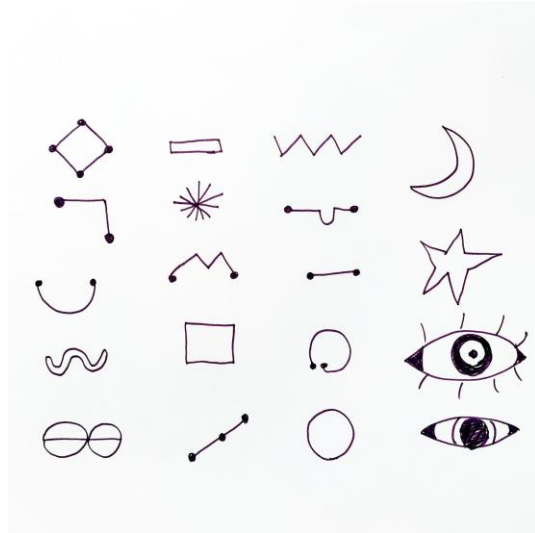
Paper, a black marker, a sponge or paper towel, watercolors, or colorful markers



- 1) In the first step you put watercolor on your sponge and lightly apply it all over your paper.



- 2) Then create some simple shapes on a separate piece of paper To practice and find shapes that you like. You can look at some paintings of Miro if you like, or invent your own sign language



3) Your background should be dry by now!



4) Start with curvy lines and add your signs. Play!



5) Add more color!



Have fun!